

# WISCONSIN CLIMATE TABLE

MONTHLY NEWSLETTER

---

FEBRUARY 2023, ISSUE 37

---



## FROM THE WCT COORDINATOR

SUSAN GAEDDERT, 1000 FRIENDS OF WISCONSIN

Welcome (back) to the monthly newsletter of the Wisconsin Climate Table! The newsletter paused in early 2020 when the Covid pandemic caused so much upheaval and disruption. While defining a “new normal” may still feel a bit out of reach, the fresh start of a new year feels like the right time to bring the newsletter back. This is a way to share news and upcoming events from member organizations and keep everyone informed about the work of ongoing campaigns on a monthly basis.

The Climate Table is funded through a grant from RE-AMP, a network of organizations in 9 states throughout the Midwest committed to the common goal of equitably eliminating greenhouse gas emissions by 2050. The Climate Table is made up of 33 member organizations representing different areas of expertise and geography in the state of Wisconsin. We pool our collective knowledge to develop tools and resources for advocacy groups and local governments, and we advocate for policies and plans that will reduce Wisconsin’s carbon footprint. We really are stronger together.

### IN THIS ISSUE:

SAVE THE DATE FOR OUR IN-  
PERSON MEETING IN  
WAUKESHA, MAY 5, 2023

CAMPAIGN UPDATES:  
COMMUNITY COMMITMENTS  
CLEAN ENERGY PLAN

UPDATES & EVENTS FROM  
MEMBER ORGANIZATIONS

---

**SAVE THE DATE!**

WCT IN-  
PERSON  
MEETING:

WAUKESHA  
MAY 5, 2023

**MORE  
DETAILS  
TO COME!**



## CAMPAIGN UPDATES

The **Community Commitments Campaign** (chair: Stephanie Robinson, 350 Wisconsin) began in 2019 with the initial purpose of supporting local governments working to pass climate resolutions. For the past year, the focus has been the development of a tool kit for equity in climate action planning. The tool is intended for local government planners and elected officials and includes an extensive menu of strategies for centering equity across multiple areas of municipal planning, examples of climate action plans from around the state, and links to federal funding opportunities and other resources. The primary task for the first quarter of 2023 is to create a user-friendly interactive online version of the tool before a public presentation at a webinar hosted by 1000 Friends of Wisconsin on Wednesday, March 15, 2023 from 12-1pm. [Register here](https://us06web.zoom.us/meeting/register/tZYsfu-hqD8oE9fohnjExMNVAIlg27Xx_Szax): [https://us06web.zoom.us/meeting/register/tZYsfu-hqD8oE9fohnjExMNVAIlg27Xx\\_Szax](https://us06web.zoom.us/meeting/register/tZYsfu-hqD8oE9fohnjExMNVAIlg27Xx_Szax)

The **Clean Energy Plan (CEP) campaign** (co-chairs: Ted Kraig, Citizen Action Wisconsin & Montre Moore, NAACP) is up and running! We meet biweekly and are in the process of analyzing the CEP, which is a sprawling document, to narrow down the initiative and strategies that have potential to have the most impact on Wisconsin communities in the next 8 months. Maria Redmond from the Office of Sustainable and Clean Energy will join us in a future meeting to answer questions and share information.



*We should be pursuing a future that actually meets the needs of the people near the project corridor." - Gregg May, 1000 Friends of Wisconsin*

## COALITION FOR MORE RESPONSIBLE TRANSPORTATION

On January 31, a coalition of 32 organizations and individuals, including several WCT members, submitted public comments in opposition to the Wisconsin Department of Transportation (WisDOT)'s expansion proposal for I-94 in Milwaukee. After reviewing WisDOT's environmental impact statement, the coalition found that WisDOT is not complying with Title IV or environmental justice procedures and that WisDOT is moving forward with an alternative with the knowledge that it will have a discriminatory effect.

Our coalition, known as **CMRT (Coalition for More Responsible Transportation)**, has been advocating against the highway's expansion for more than a decade and has been asking for a more equitable and sustainable design, called "Fix at Six," which would support walking, biking, and transit as opposed to highway expansion. Comments expand on what was shared during the public hearings, in which 67% of the verbal comments opposed WisDOT's alternatives and called for a "Fix at Six" solution, while only 14.5% of commenters called for the 8-lane alternative. Although the future for I-94 has not been determined, several elements of CMRT's vision have already been incorporated into WisDOT's updated plans, including the Stadium Freeway Boulevard study, a smaller Stadium Interchange, and potential Bus Rapid Transit funding on 27th street.

*1000 Friends of Wisconsin, ACLU of Wisconsin, African American Roundtable, Amalgamated Transit Union, Black Leaders Organizing for Communities (BLOC), Clean Wisconsin, Community Huddle, Faith in Place, Friends of Valley Park, Greening Greater Racine, Hummingbird MKE, MICAH (Milwaukee Innercity Congregations Allied for Hope), Midwest Environmental Advocates, Milwaukee Riverkeeper, Sierra Club - Great Waters Group, Sierra Club - Wisconsin Chapter, Walnut Way Conservation Corp., Wisconsin Bicycle Federation, Wisconsin Faith Voices for Justice, Wisconsin Health Professionals for Climate Action*



## CLEAN WISCONSIN

A new report from **Clean Wisconsin** reveals that the state of Wisconsin could reap far more

energy from solar. This new report compares the land use efficiency of two forms of energy production: corn for ethanol and solar PV. We are already using 1 million acres (1/4 of the corn grown in Wisconsin) for ethanol production, yet solar PV is 100 times more efficient. If we used just 1/3 of the land currently being used to grow corn for ethanol, we could meet WI's 2050 carbon-free goals. These figures show that using a small fraction of ag land to produce solar energy is not a threat to food production, and in fact we could use far less land than we do now if we switched from ethanol to solar. [Read the press release here](https://www.cleanwisconsin.org/more-energy-on-less-land-analysis-reveals-solar-farms-produce-100-times-more-energy-per-acre-than-corn-ethanol/): <https://www.cleanwisconsin.org/more-energy-on-less-land-analysis-reveals-solar-farms-produce-100-times-more-energy-per-acre-than-corn-ethanol/>



cleanwisconsin   
CORN ETHANOL VS. SOLAR  
LAND USE COMPARISON

JAN 19, 2023 / ANALYSIS BY PAUL MATHEWSON, PHD, AND NICHOLAS BOSCH



## CITIZEN ACTION WISCONSIN

On Wednesday, February 15th, Governor Tony Evers will address the public and the state legislature with his vision for Wisconsin via his bi-annual budget address. Watch his address with like-minded folks with **Citizen Action of Wisconsin!** The program starts at 6:30pm with a chance to discuss the state budget process before the Governor begins at 7pm. There will be an in-person Watch Party at the Citizen Action office in Milwaukee (4716 W. Vliet St, Milwaukee, WI 53208) or [RSVP to join the virtual gathering](https://secure.everyaction.com/2-o-5AuzxkOHAoplOKzZBw2): <https://secure.everyaction.com/2-o-5AuzxkOHAoplOKzZBw2>

*"With just a fraction of what we're using already to grow corn ethanol for energy, we can produce enough homegrown energy (with) solar panels that would power our state's clean energy economy..." -Chelsea Chandler, Clean Wisconsin*

**WISCONSIN GREEN MUSLIMS**

### Islamic Climate Ready, Resilient, and Restored Communities: *How to Weather the Storm?*

Fridays after Jumua'a Prayer

How can our Islamic institutions and communities be hubs of resilience and restoration helping people and each other weather the physical, social, and spiritual storms of the climate crisis?

Come join us in these listening sessions to explore and learn strategies and tools to help us address the climate crisis impacts, through mitigation, adaptation and loss and damage.

[info@WisconsinGreenMuslims.org](mailto:info@WisconsinGreenMuslims.org) | @WgreenMuslims

## SIERRA CLUB - WISCONSIN CHAPTER



The Nemadji Trail Energy Center, or NTEC, is a proposed 625 MW gas plant that, if built, would be located in Superior, Wisconsin. It is co-proposed by Wisconsin cooperative Dairyland Power and would pose a threat to public health and climate, all while being more expensive than a clean energy portfolio. The EPA also recently estimated that, taking into account the social cost of carbon, the cost of NTEC over 15 years would be \$2.15 billion. Despite the major concerns around gas as a fossil fuel and the high cost, the coop is continuing with their plans. We're uplifting an ask of their CEO to cancel the project and invest in clean energy instead: <https://addup.sierraclub.org/campaigns/no-new-fracked-gas-plant-near-lake-superior/petition>

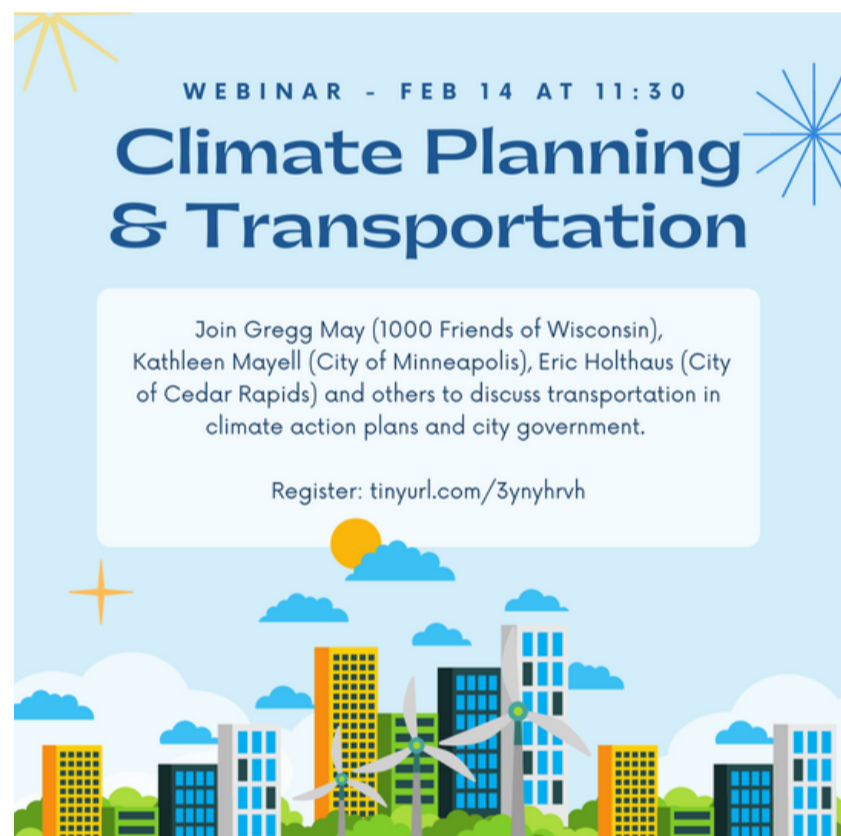
## CALL FOR SUBMISSIONS!

Items for the March WCT newsletter should be submitted by **Friday, March 3 at noon.**

Send a write-up of **no more than 200 words** plus an image and any links to share. I am also looking for seasonal photos from around Wisconsin to feature on the cover page each month.

Send all information to: [susan@1kfriends.org](mailto:susan@1kfriends.org)

## 1K FRIENDS & RE-AMP



Join **1000 Friends of Wisconsin** and the **RE-AMP Network** on Feb. 14 at 11:30 CT/12:30 ET for the release of our new report, "Transportation Planning for People and the Climate: Lessons from the Midwest." We examined climate plans, comprehensive plans, and transportation plans across 25 jurisdictions in five states to understand how different plans can work together to maximize benefits for communities and the climate.

Register here:

[https://us02web.zoom.us/webinar/register/WN\\_74Ax5NZLSHyD5uSaN-e56A?\\_x\\_zm\\_rtaid=JYhpamirThi62PeUYp\\_krQ.1675705271891.04e53179264e9bf57a52327680f08ae3&\\_x\\_zm\\_rhtaid=933](https://us02web.zoom.us/webinar/register/WN_74Ax5NZLSHyD5uSaN-e56A?_x_zm_rtaid=JYhpamirThi62PeUYp_krQ.1675705271891.04e53179264e9bf57a52327680f08ae3&_x_zm_rhtaid=933)